

# REDUCING THE CLIMATE IMPACT OF PROFESSIONAL AIR TRAVEL: TRAVEL: LANDING ALTERNATIVES FOR UNIVERSITY FACULTY & STAFF

**Andrew Tran**



@andyIt94



Host organization: UW Sustainability Office  
Site supervisor: Elise Glassman, UW Sustainability  
Faculty advisor: Yen-Chu Weng, Program on the Environment

# Current altitude of air travel at UW

Air travel makes up at least **11%** of UW's carbon footprint

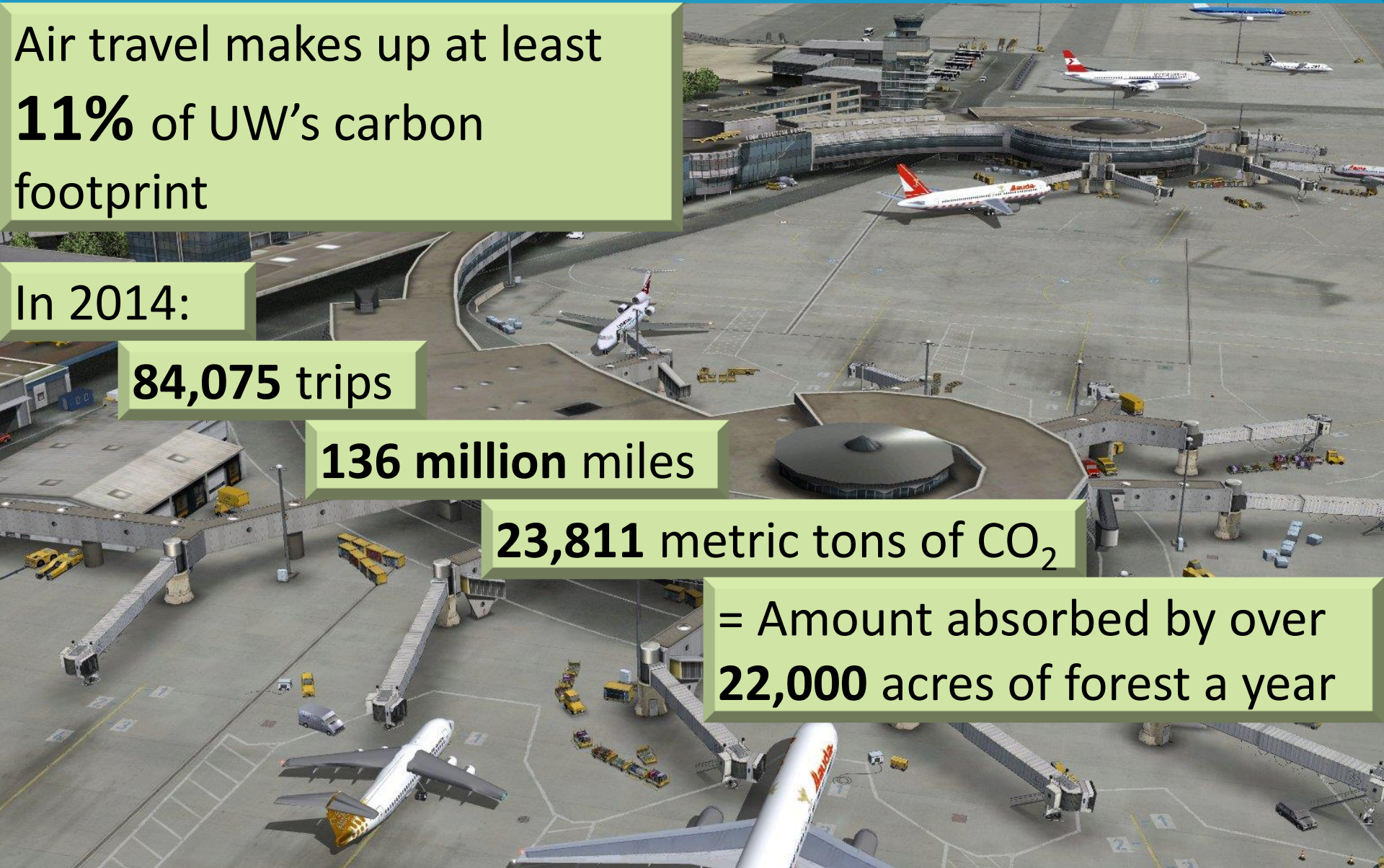
In 2014:

**84,075** trips

**136 million** miles

**23,811** metric tons of CO<sub>2</sub>

= Amount absorbed by over **22,000** acres of forest a year



# The ascending rationale



1. Carbon emissions contribute to climate change

2. Faculty and staff air travel continues to increase

# My high-flying research questions



1. Are there alternatives within travel communications systems that may reduce unsustainable professional air travel?
2. What are the challenges to their success and implementation?

# Methods: UW Sustainability internship

Presented awareness to professional parties



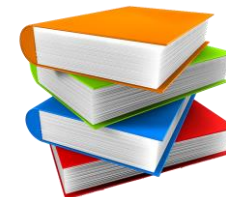
Created a communications plan



Researched alternatives to air travel



Reviewed literature on challenges to alternatives



# Methods: Presentations

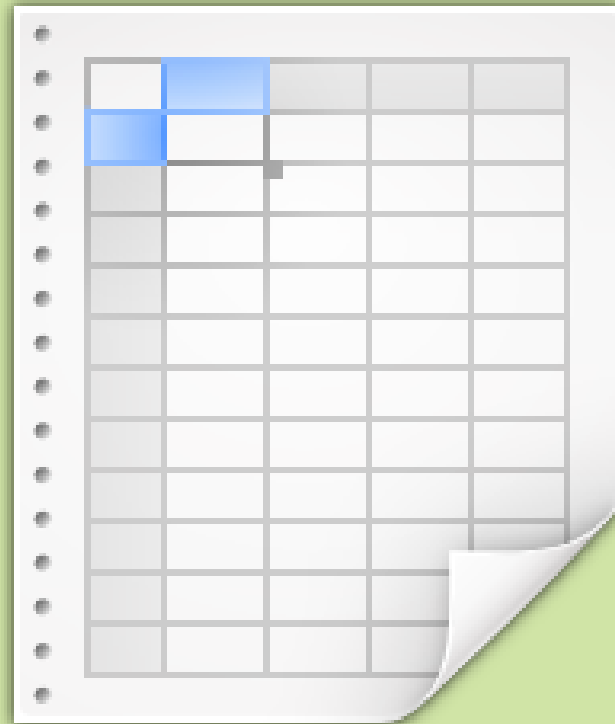


Presentation to the UW Travel Office  
Information Meeting on August 25<sup>th</sup>, 2016

# Methods: Communications plan

A quarterly spreadsheet that plans:

- Delivery date
- Media stream
- Audience
- Purpose
- Message



# Results: Conferencing alternatives



zoom



Offer many features including:

- Free or low cost on campus
- Large number of participants
- Unlimited meetings
- Screen and file sharing
- Instant messaging
- Video and audio recording



# Results: Transportation alternatives

## Air Travel Versus Alternatives

Sample Short-Haul Trip (<300 miles): Seattle to Spokane

	Roundtrip CO <sub>2</sub> e	Roundtrip Cost	Roundtrip Time
	271 lbs	From \$189	2 Hours*
	268 lbs*	From \$28	8 Hours
	132 lbs	From \$36	5-6 Hours
	209 lbs	From \$110	7-8 Hours

# Results: Challenges to alternatives

Economic incentives



High valuation of time and convenience

Environmental backgrounds and beliefs

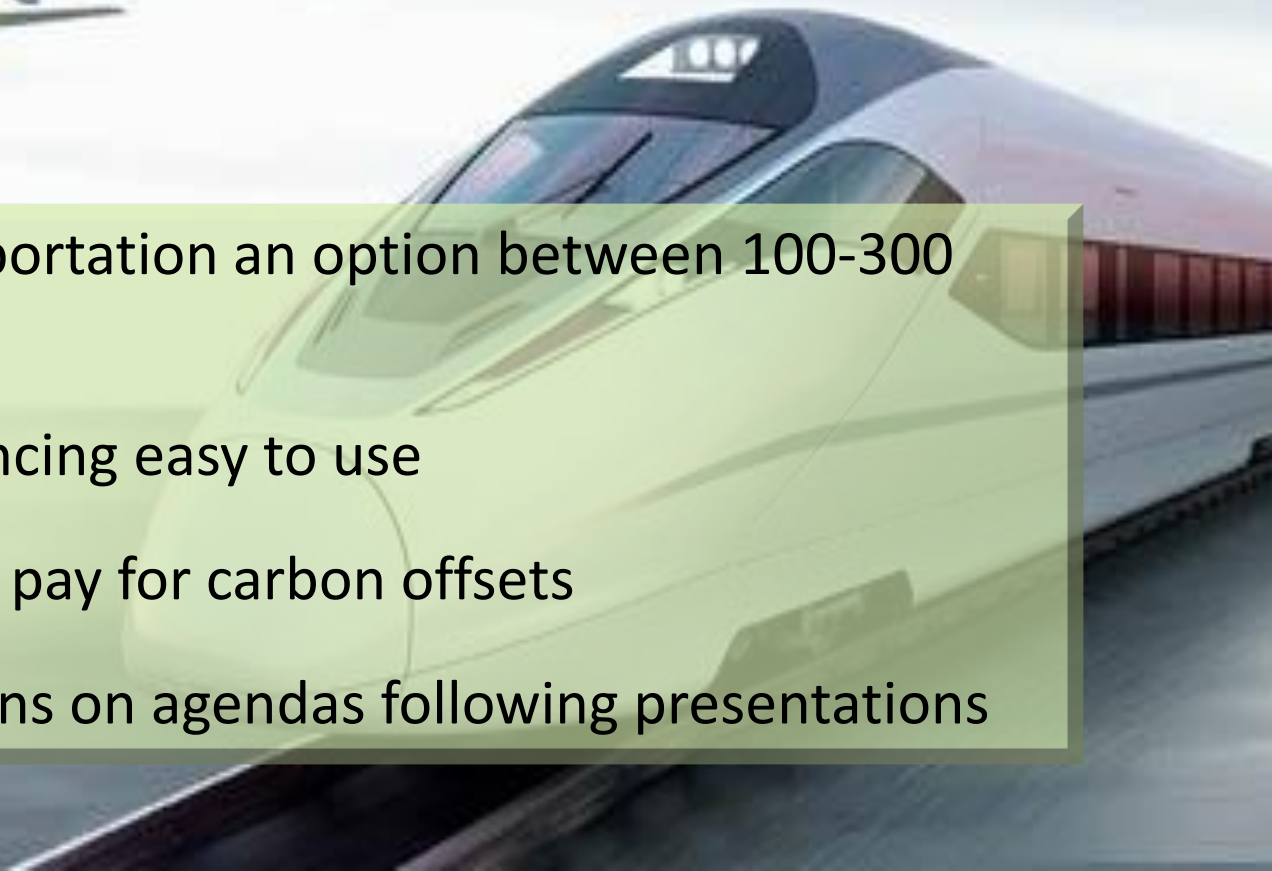


Lack of sustainable travel infrastructure

# Results: Optimism for faculty and staff



- Ground transportation an option between 100-300 miles
- Videoconferencing easy to use
- Willingness to pay for carbon offsets
- Travel emissions on agendas following presentations



# Significance of my study



- Raises awareness of unsustainable travel
- Creates a stepping stone for future communication
- Helps UW consider sustainable innovations in travel infrastructure

# Conclusion

- Air travel emissions are a climate threat
- Personal incentives need to be accounted for
- Need a top-down approach for behavior change
- Systematic infrastructure and policy changes are necessary

# Acknowledgements

- **Elise Glassman**
  - Site supervisor
- **Yen-Chu Weng**
  - Faculty advisor
- **UW Sustainability**
- **UW Travel Office**
- **Family and friends**



***Thank You!***