

# SUSTAINABILITY ACTION PLAN

*UW Medicine Visioning Session*



UNIVERSITY *of* WASHINGTON

# Welcome and Warm Up

---



# UW OFFICE OF SUSTAINABILITY



**Lisa Dulude**  
*Director*



**Daimon Eklund**  
*Communications  
Manager*



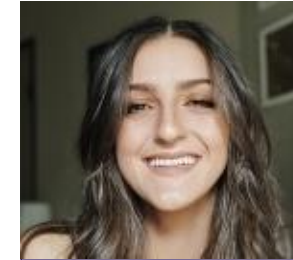
**Danny  
Arguetty**  
*CSF Program  
Director*



**Marilyn  
Ostergren**  
*Energy &  
Sustainability  
Specialist*



**Lauren Schultz**  
*Sustainability  
Planning & Policy  
Specialist*



**Emily Adams**  
*Sustainability  
Project &  
Engagement  
Specialist*

## Students



**Elena Hamblin**  
*Events & Outreach Intern*  
sustainability@uw.edu



**Lee Hardisty**  
*Graphic Designer*  
envdesgn@uw.edu



**Maddy Laoprasert**  
*CSF Associate Program  
Director*  
csfcoord@uw.edu



**Kort Maeda**  
*Campus Sustainability Fund  
Outreach Coordinator*  
uwcsf@uw.edu



**Kellie Telis**  
*Collaborations Intern*  
sustainability@uw.edu



**Boyang 'Boe' Zhou**  
*CSF Grant and Project  
Coordinator*  
csfproj@uw.edu

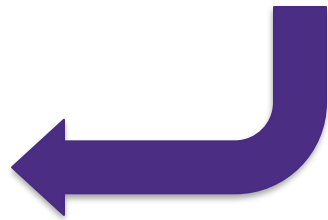
**Website:** [sustainability.uw.edu](https://sustainability.uw.edu)  
**Email:** [sustainability@uw.edu](mailto:sustainability@uw.edu)

# Who's here?



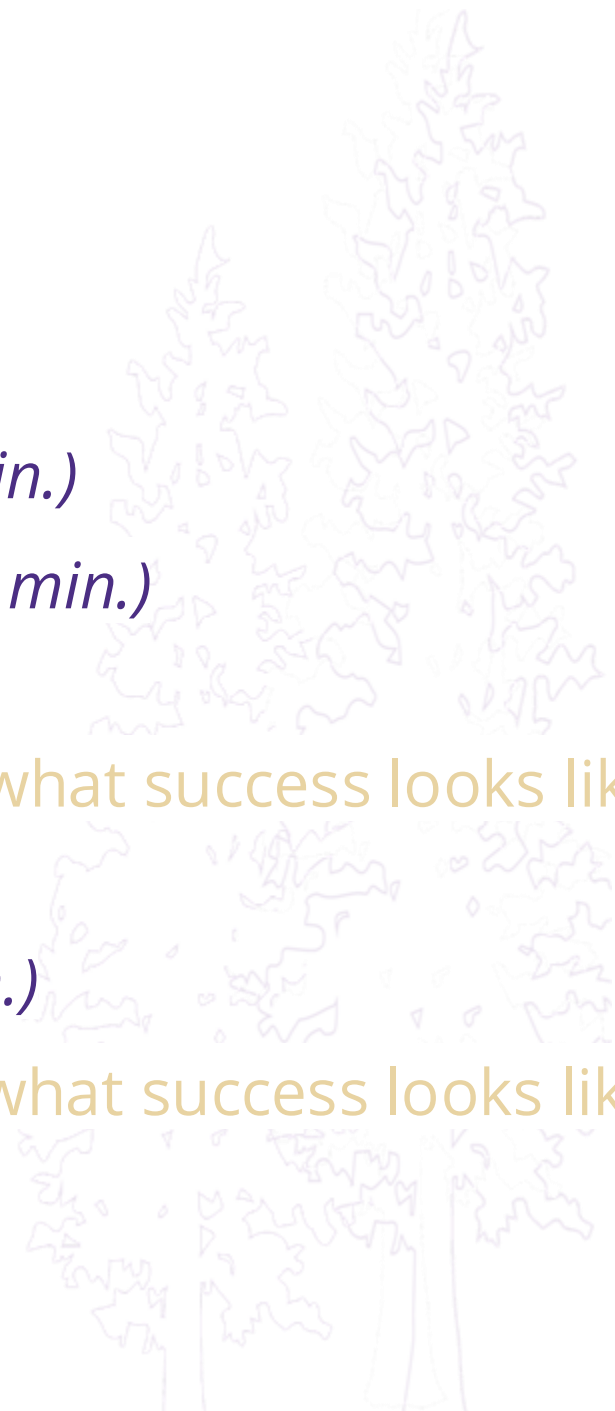
**Join the mentimeter to share!**

Scan the **QR Code** or follow the **link in the chat**.



# Agenda

1. **Welcome and Warm Up** *(15 min.)*
2. **Sustainability Action Plan Overview** *(10 min.)*
3. **UW Medicine Sustainability Initiatives** *(10 min.)*
4. **Individual Visioning** *(15 min.)*
  - What sustainability looks like today, and what success looks like in 2050
5. **Breakout Group Visioning Stations** *(65 min.)*
  - What sustainability looks like today, and what success looks like in 2050
6. **Wrap Up and Next Steps** *(5 min.)*



# Overview: UW Sustainability Action Plan 2020-2025

---



# UW Sustainability Action Plan

## Ten Measurable Targets

I.

Double Student, Staff, and Faculty Sustainability Engagement by 2024

VI.

35% of Food is From Local Sources by 2025

II.

One UW-Wide Sustainability Framework

VII.

6% decrease in single-occupancy commuting rate per campus by 2028

III.

Double Sustainability-Oriented Research Projects by 2025

VIII.

15% Lower Energy Usage Intensity by 2025

IV.

Comprehensive Equitable Purchasing Targets

IX.

10% Less Solid Waste

V.

5% Lower Emissions from Professional Travel by 2025

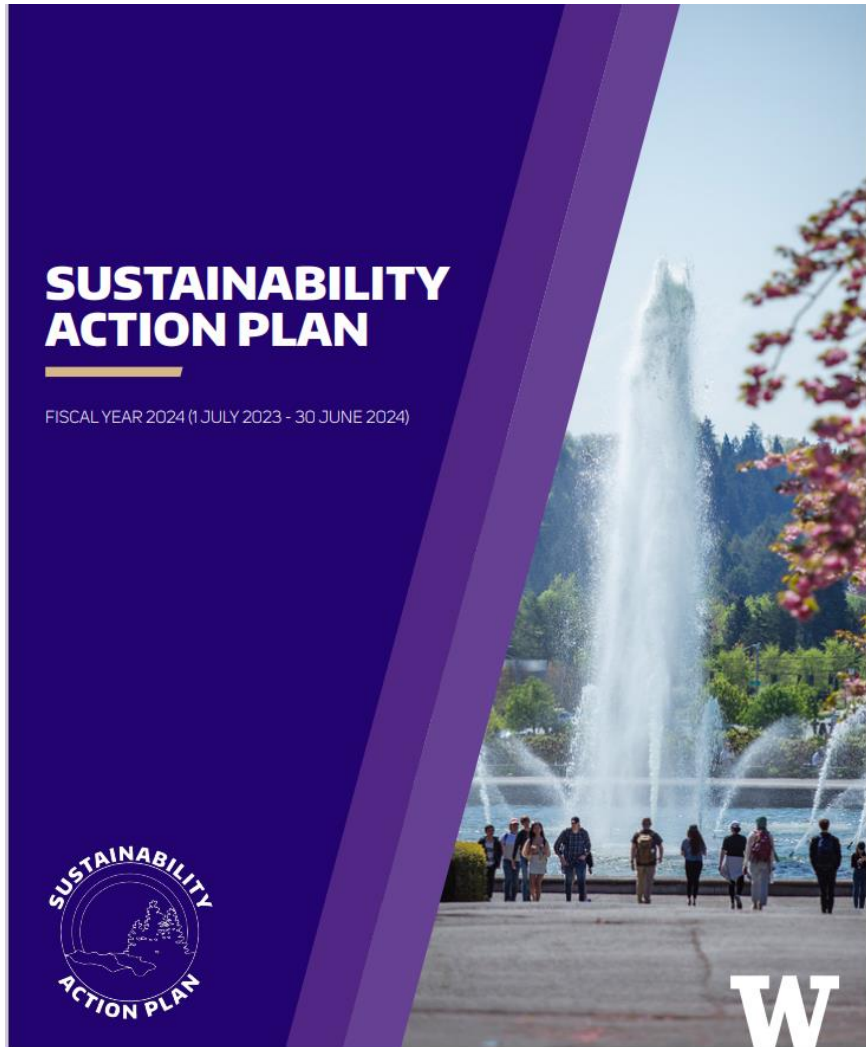
X.

45% Reduction of GHG Emissions by 2030

## Grounded by five **Guiding Principles**:

1. Ensure Students Achieve Sustainability Literacy
2. Choose our Research Conscientiously
3. Keep Equity and Inclusion at the Center
4. Use Resources Responsibly
5. Decarbonize

# Updating the Sustainability Action Plan



## Areas of Opportunity

### Goals and Targets

- Informed by data & best available science
- Bold and reflect urgency

**Address scope gaps**, such as: water conservation, solid waste, sustainable purchasing, green building, climate adaptation and resiliency, etc.

**More inclusive** of tri-campus, and better integrated with UW Medicine, Athletics, Housing & Food Services.

**Identify policy and financing needs** at the action item level



# Updating the Sustainability Action Plan

## Goals for our new University Plan:

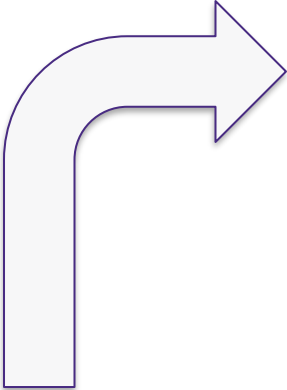
- Establish a 2050 vision
- Driven by data
- Address topical area gaps
- Share stories and perspectives from our UW community
- Identify funding and resource needs to meet our goals



# Process Overview for Updating the Plan



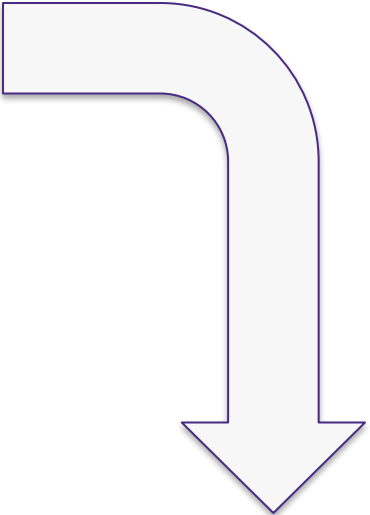
**Phase 1: 2050 Vision**  
*A collective, forward-looking vision that reflects the diverse perspectives across our University community*



**Phase 2: Goals**  
*Translate broad aspirations into concrete, measurable goals and strategic approaches.*



**Phase 3: Draft the Plan**  
*The draft goals and strategies will be compiled into a comprehensive document.*



**Phase 4: Refine the Plan**  
*We will solicit and utilize community input and comments to revise and refine the draft Plan.*

# UW Medicine Sustainability

---



## Overview\*

7 entities

3 hospitals (4 sites)

1,651 licensed beds

35,000 employees

61,323 admissions

208,672 ED visits

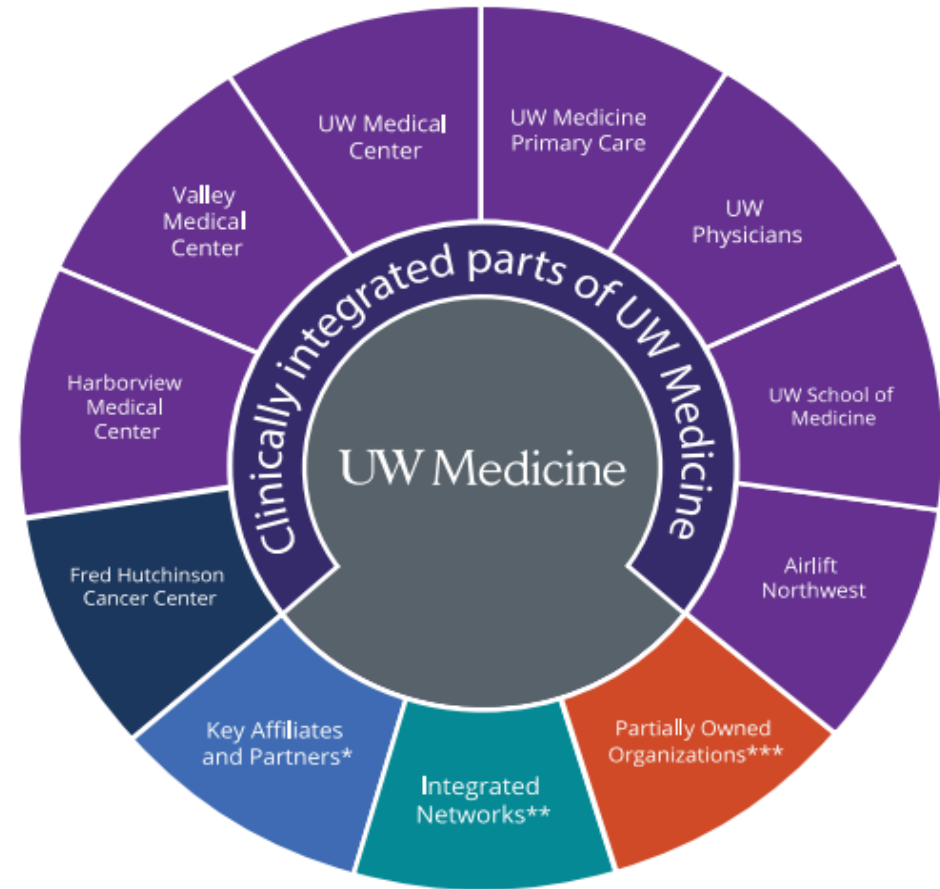
60,668 OR procedures

6,316 births

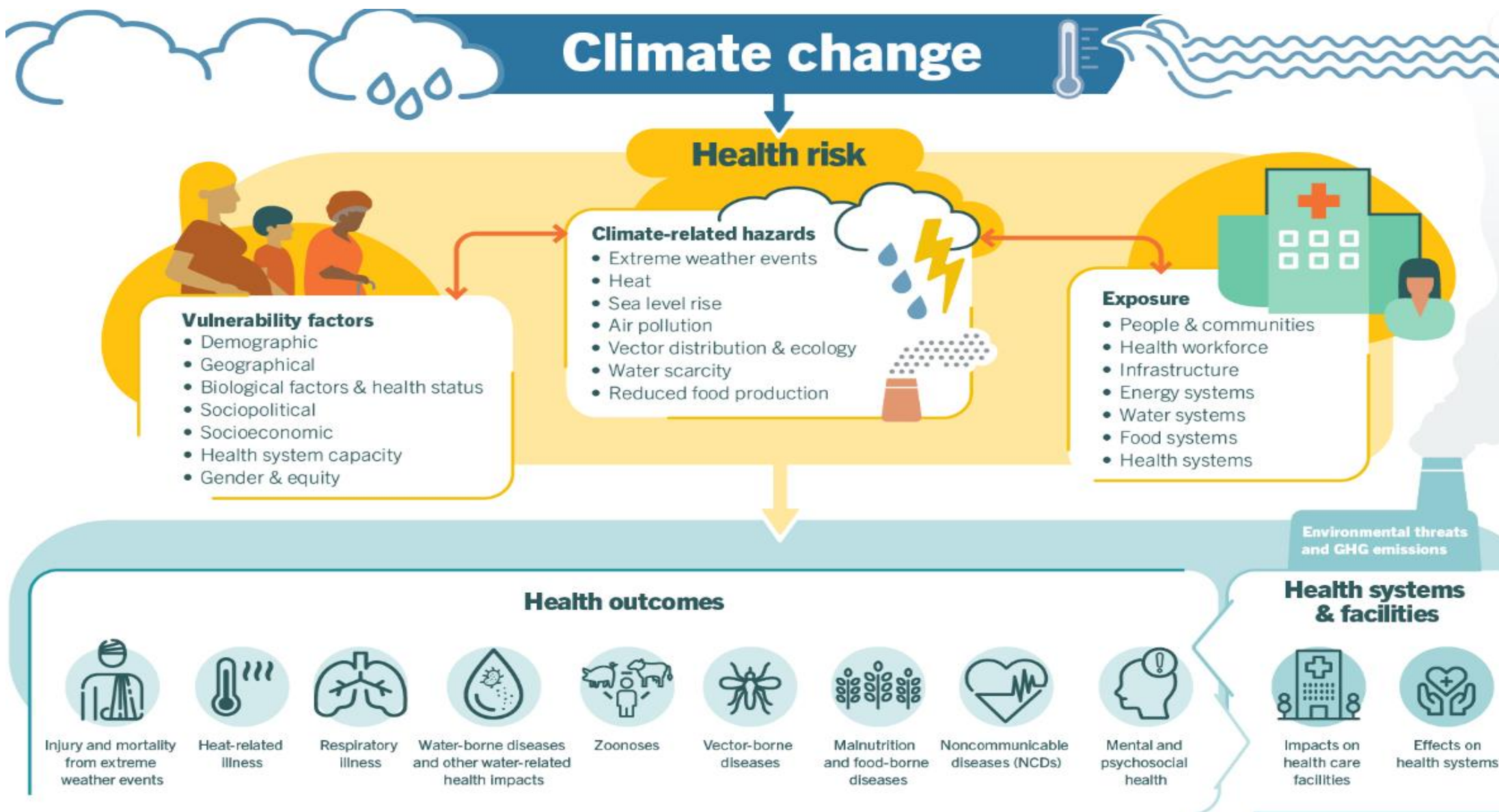
1,867,244 ambulatory visits

\$836 Million in uncompensated care

\$1.3 Billion in annual Supply Chain spend

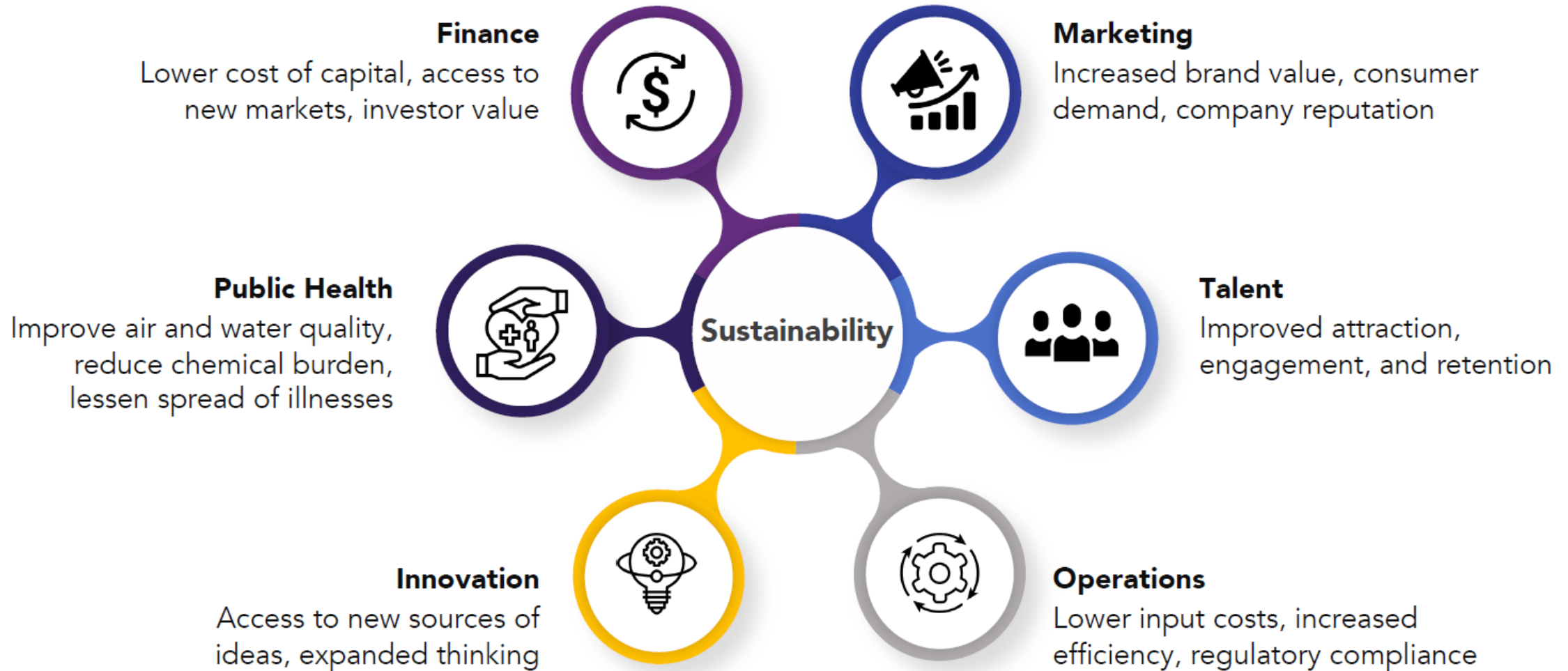


# Importance of Sustainability in Healthcare



# Additional Benefits

---



# Sustainability Goals at UW Medicine



Ensure care delivery systems are resilient to climate impacts.



Care for patients impacted by climate change.



Develop sustainable healthcare operations.



# UW Medicine Accomplishments

---



Signed the HHS White House Health Sector Climate Pledge



Launched public facing sustainability web site with the UWM commitment statement



Completed GHG Inventory for Scope 1, 2, and 3 with University of WA



UWMC Center for Behavioral Health and Learning achieved LEED Gold Certification



Participated in School of Medicine Climate Change in Clinical Practice Symposium



Recent Awards: Stryker Sustainability Solutions Healthy Hospital Platinum and Gold Awards, Practice Greenhealth Awards (HMC), Husky Sustainability Award (HMC)



# Economic Benefits of Sustainability



Use of reusable sharps containers saves **\$230,000** annually.



UW Medicine save more than **\$200,000** per year by diverting compost and recycling out of the landfill.



Updates to fluid management systems and OR kit reformation led to **\$265,000** in savings.



Standardized Facial Protection reducing SKU counts. Cost Savings: **\$300,000+**



The UWM Supply Chain single use device reprocessing program has saved over **\$27 million**.

# BLUE WRAP

- Started August 2022
- Baled onsite
- Recycled at Denton Plastics in Portland, OR
- Only blue wrap
  - Table cover wrap, gown wrap, etc. are a different materials

**Diverted ~ 4 tons in 1 year!**



# Nitrous Oxide GHG Emissions

Nationally, Hospitals are Taking Steps to Reduce Emissions from Anesthetic Gases

## UW Medicine - A System Approach

### Montlake

- Anesthesiologists led efforts to reduce the clinical use of N2O

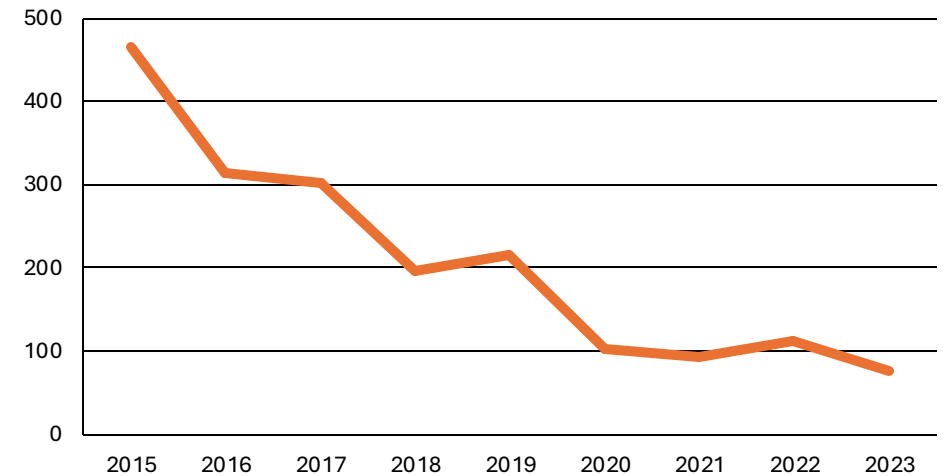
### Harborview

- Initiated a project to decommission central supply of N2O

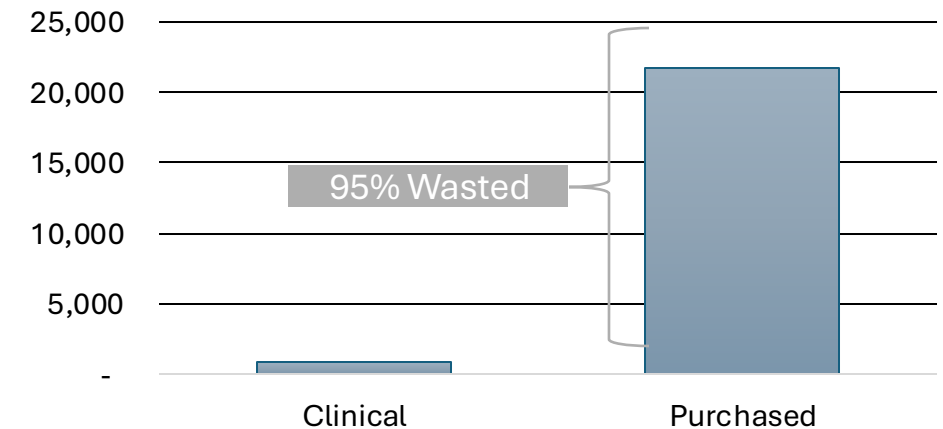
### UWMC

- Apply lessons learned from HMC to evaluate decommissioning at Northwest and Montlake

Clinical Nitrous Use UWMC Montlake (lb)

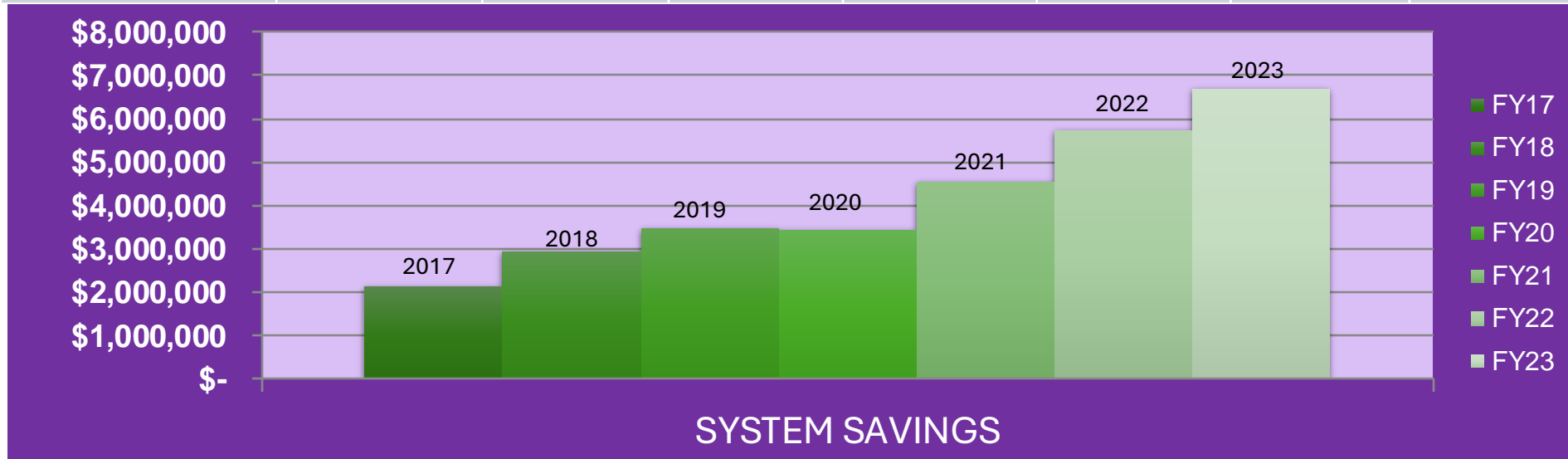


2022 Clinical Nitrous Use v Purchased HMC (lb)



# UW Medicine Single Use Device Reprocessing Program Growth

	FY2017	FY2018	FY2019	FY2020 (COVID)	FY2021	FY2022	FY2023
<b>Total Supply Cost Savings:</b>	\$2,127,400	\$2,931,416	\$3,474,763	\$3,433,922	\$4,554,541	\$5,748,586	\$6,874,274



- **450k+ Pounds of waste diverted from landfills**
- **869 Trees planted on behalf of UW Medicine**
- **\$42,000 worth of precious metal recycled**

# SYMPOSIUM ON CLIMATE CHANGE AND CLINICAL PRACTICE

- March 6<sup>th</sup>
- 8am – 1:30PM

## THIS EVENT IS FOR:

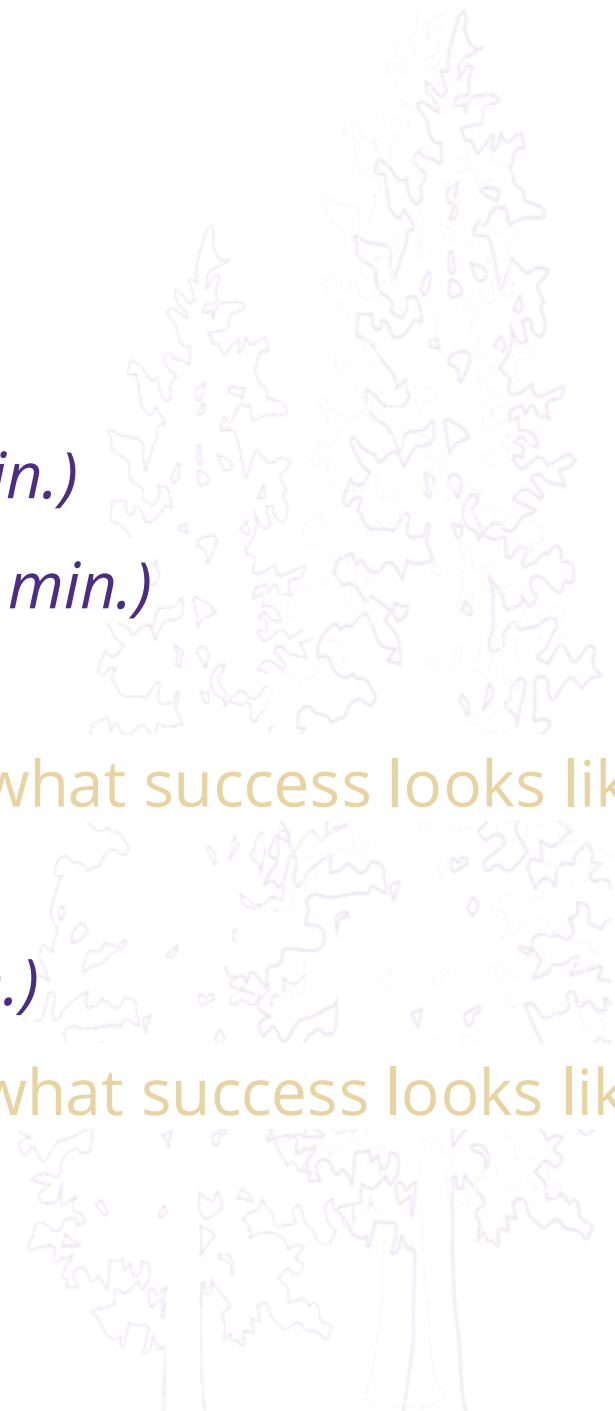
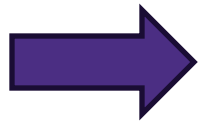
- Clinical practitioners and support staff
- Health care operations
- Medical students
- Climate policy makers & advocates
- Medical residents and fellows
- Medical maintenance and facilities professionals
- Allied health students and faculty in medicine, social work, nursing, pharmacy and more!



**[Click here for more information and to register.](#)**

# Agenda

1. **Welcome and Warm Up** *(15 min.)*
2. **Sustainability Action Plan Overview** *(10 min.)*
3. **UW Medicine Sustainability Initiatives** *(10 min.)*
4. **Individual Visioning** *(15 min.)*
  - What sustainability looks like today, and what success looks like in 2050
5. **Breakout Group Visioning Stations** *(65 min.)*
  - What sustainability looks like today, and what success looks like in 2050
6. **Wrap Up and Next Steps** *(5 min.)*



# Today's Approach

## What is?

Taking stock of our successes and challenges.

## What if?

What does sustainability success look like for UW?

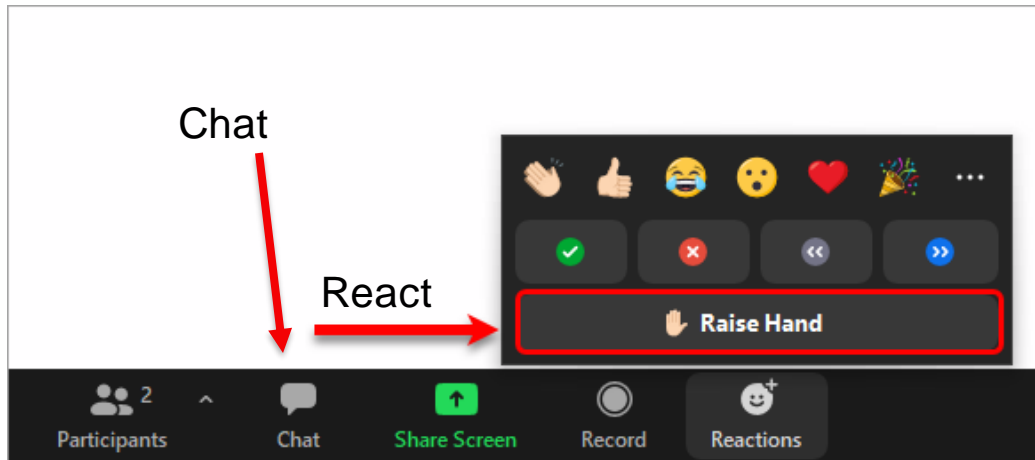
## What's next?

Working groups will transform our ideas into goals and actions.



# Ground Rules

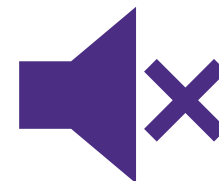
## *Best Practices for a Successful Virtual Meeting*



Ask clarifying questions if you don't understand.



Be an active participant – and listener. Avoid interrupting others.



If you aren't talking, please mute or turn off your microphone.

### **Zoom Processes**

- Computer users: Raise your hand using the raise hand icon.
- Call-in users: Dial \*9 to raise and lower your hand.
- Please announce your name and organization when called on.

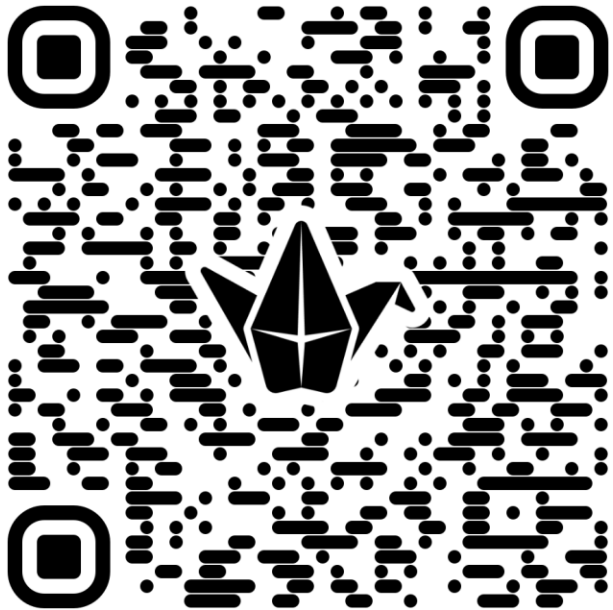


# Individual Visioning

---



# Please Share Your Thoughts



**Join the padlet to share!**

Scan the **QR Code** or follow the **link in the chat**.



# Breakout Visioning Stations

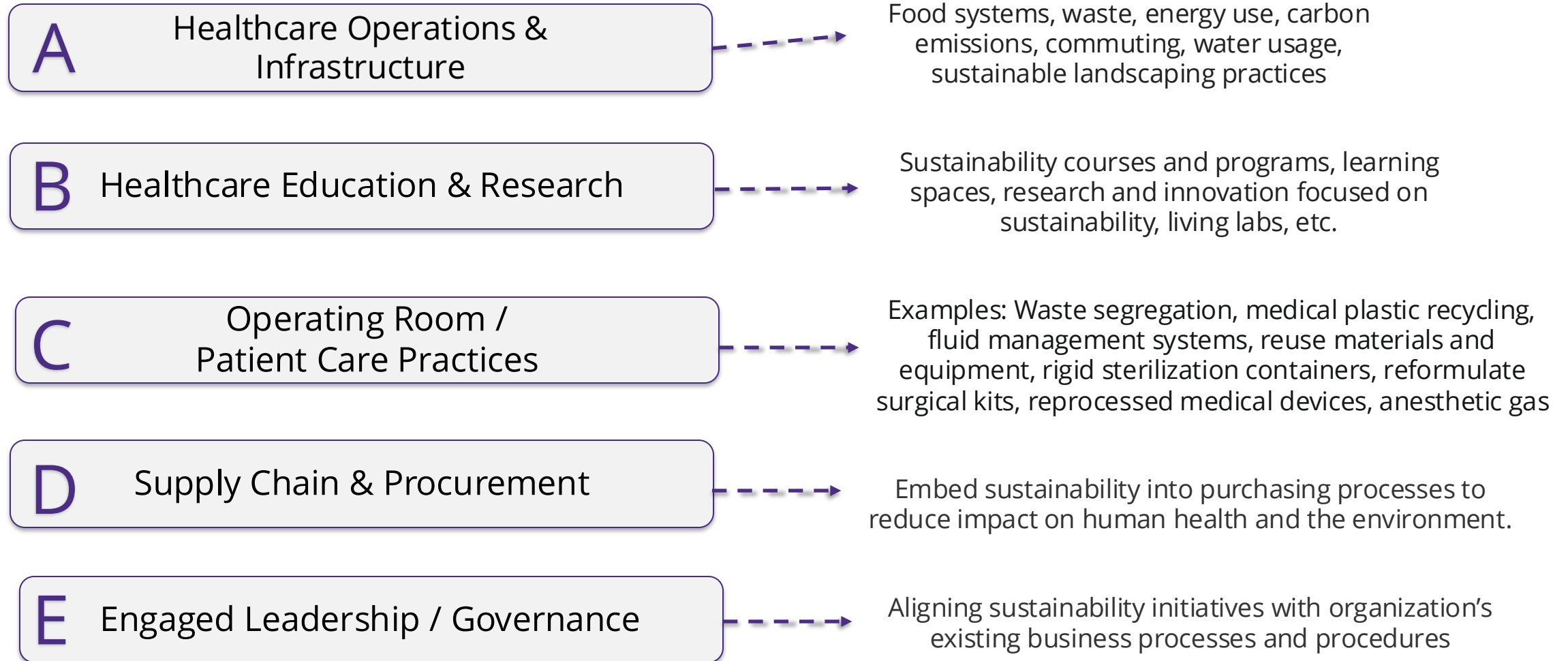
---



# Breakout Visioning Stations

You will be sent to a breakout group automatically.  
A facilitator will guide you through 5 different topics.

TOPICS



# Wrap Up

---

**W**

# Wrap Up

- All input gathered today will be documented and shared on our website.
- Stay connected with the plan on our website: [sustainability.uw.edu/plan](https://sustainability.uw.edu/plan)
- Questions? Reach out to [sustainabilityplan@uw.edu](mailto:sustainabilityplan@uw.edu)

**Take our survey!**

(please)



**Thank you!**

A thick yellow horizontal line underlining the text "Thank you!".

**W**